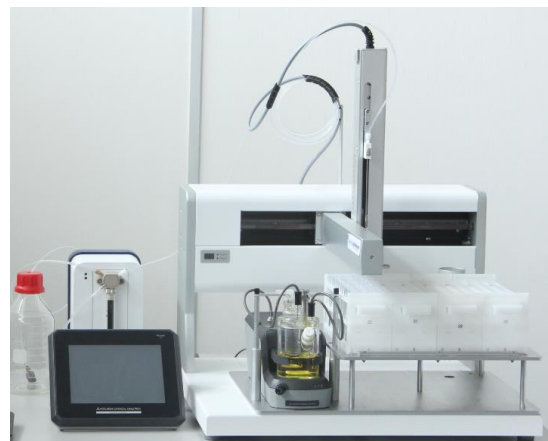


AquaFAST Direct - Automated Karl Fischer Moisture Analysis

a1-envirosciences are proud to introduce the AquaFAST - a revolutionary automated Karl Fischer moisture analysis system. The AquaFAST Direct is ideal for the analysis of liquids that can be injected directly into a Karl Fischer cell. The AquaFAST incorporates the Mitsubishi/Nittoseiko CA-310 Karl Fischer to analyse moisture. The CA-310 is at the forefront of Karl Fischer technology and is the latest in a long line of Mitsubishi Moisture meters considered to be gold standard within the industry.

- Automated analysis of up to 200 liquid samples
- Reduce reagent costs and can use low cost sample tubes
- Automated exchange/refill of Karl Fischer reagent
- Needle wipe to prevent contamination
- Automatic removal of samples for oils increasing reagent lifetime
- Detection of 5ppm - 100% moisture
- Full PC Control with LIMS import/export function and excel reporter

Applications: Transformer oils, Petrochemical fuels (without additives), Solvents, Light oils, Biofuels, Vegetable oils/fats.



AquaFAST Oven - Automated Karl Fischer Moisture Analysis

The AquaFAST Oven exchanges some of the sample capacity of the AquaFAST Direct for the addition of the Nittoseiko VA210 liquid vaporiser. The VA210 allows the AquaFAST oven to analyse liquid samples that would otherwise interfere with Karl Fischer reagent.

- Automated analysis of up to 120 liquid samples

Applications: ASTM D6304, Lubricants, Engine oils, Viscous liquids, Viscous vegetable oils/fats.



AquaFAST Extraction - Karl Fischer Moisture Analysis

The AquaFAST Extraction allows the high throughput analysis of solids using an automated methanol extraction technique.

- The AquaFAST automatically adds pre-dried Mitsubishi Aquamicon KF reagent to sample and blank vials.
- Orbital shaker used to mix sample and reagent to extract water
- Automatic removal of extract and injection into Karl Fischer cell

Applications: Biological samples, thermally unstable solids, solids that interfere with reagents





Wolflabs

Wolf Laboratories Limited

www.wolflabs.co.uk

Tel: 01759 301142

Fax: 01759 301143

sales@wolflabs.co.uk



Use the above details to contact us if this literature doesn't answer all your questions.

Pricing on any accessories shown can be found by keying the part number into the search box on our website.

The specifications listed in this brochure are subject to change by the manufacturer and therefore cannot be guaranteed to be correct. If there are aspects of the specification that must be guaranteed, please provide these to our sales team so that details can be confirmed.

